



GSPS Marine
3807 Gulf Shores Parkway,
Gulf Shores, AL, 36542
Phone: 251-948-6748

Avid 21 FS

Boat Type: Bay Boat



OVERVIEW

21 FS | SPECIFICATIONS

| | |
|--------|--------|
| Length | 20' 7" |
|--------|--------|

| | |
|------|-----|
| Beam | 97" |
|------|-----|

| | |
|----------------|-----|
| Transom Height | 25" |
|----------------|-----|

| | |
|----------------|--------|
| Max Horsepower | 150 HP |
|----------------|--------|

| | |
|-------------|--|
| Side Height | |
|-------------|--|

| | |
|----------------------------------|-------------|
| | 24" |
| Bottom Width | 69" |
| Approximate Draft | 11" |
| Aluminum - 5052 Gauge | 0.125 |
| Deadrise @ Transom | 13° |
| Approximate Boat Weight | 1,488 lbs |
| Fuel Capacity | 34 Gallons* |
| Forward Livewell/Baitwell | 13 Gallons |
| Aft Livewell | 21 Gallons |
| Bow Fish Box | 100 Quarts |
| Persons and Total Persons Weight | 7/1025 lbs |
| Max Weight Capacity | 1787 lbs |

SPECIFICATIONS

Basic Information

| | | | |
|---------------|-------|----------------|----------|
| Manufacturer: | Avid | Boat Type: | Bay Boat |
| Model: | 21 FS | Hull Material: | |
| Year: | 2020 | Hull Type: | |
| Category: | Power | | |

Dimensions & Weight

| | | | |
|---------------|-------------------------|-------------------|-------------------------|
| Length: | 21.00 ft | Draft - max: | 0 ft 11 in - 0.28 meter |
| LOA: | 20 ft 7 in - 6.27 meter | Bridge Clearance: | - |
| Beam: | 8 ft 1 in - 2.46 meter | Dry Weight: | 1488 ft |
| Deadrise Aft: | 13.00 ° | | |

Tank Capacities

| | | | |
|-------------------|------------------------|---------------|---|
| Fuel Tank: | 34 gallons - 1 tank(s) | Holding Tank: | - |
| Fresh Water Tank: | - | | |

Accommodations

| | | | |
|-----------------|----|--------------|---|
| Total Cabins: | - | Crew Cabins: | - |
| Total Berths: | - | Crew Berths: | - |
| Total Sleeps: | - | Crew Sleeps: | - |
| Total Heads: | - | Crew Heads: | - |
| Captains Cabin: | No | | |

FEATURES

21 FS | CONSTRUCTION

5052 Aluminum alloy featuring Proprietary TruTaper Beam Forward Gunnel.
Backed by a Limited Lifetime Hull Warranty

21 FS | HARDWARE

- PREMIUM PERKO LATCHES
- 3 POLISHED STAINLESS STEEL SEAT BASES – 1 BOW, 2 AFT DECK
- STAINLESS STEEL DRINK HOLDERS - 4
- STAINLESS STEEL FLIP UP CLEATS - 4
- STAINLESS STEEL FLOOR DRAIN

21 FS | AFT LIVEWELL & FORWARD BAITWELL

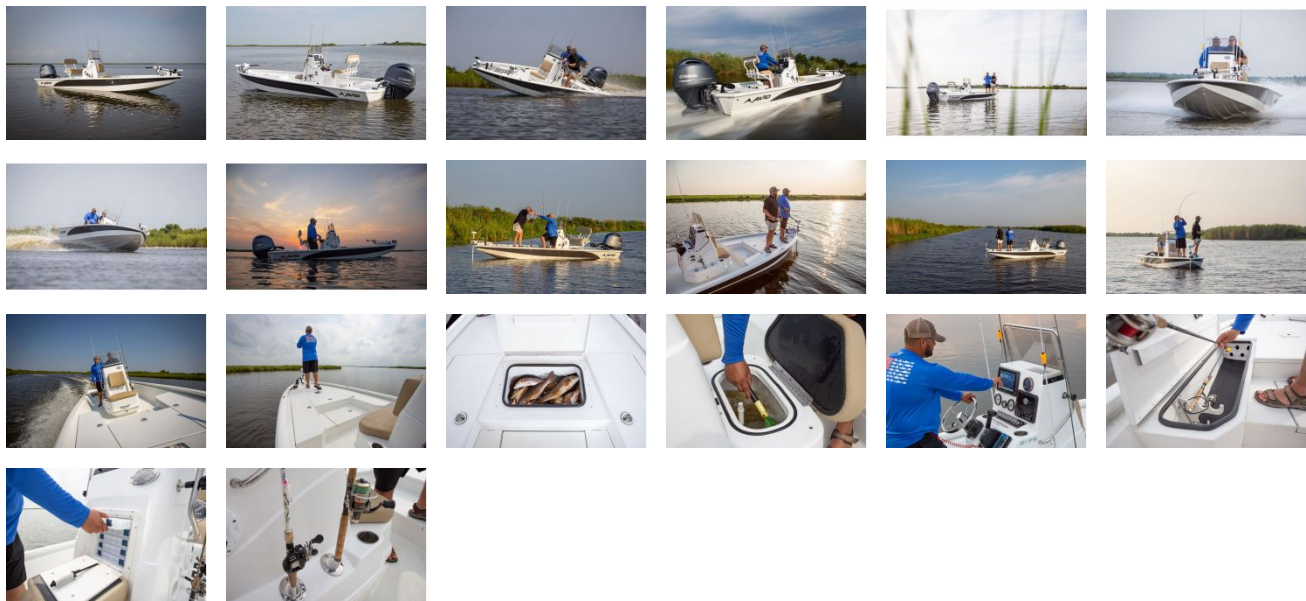
- HIGH SPEED AERATOR PICKUPS
- AFT RECIRCULATION PUMPS - 500 GPH W/ TIMER AND MAX AIR SYSTEM
- AERATOR PUMPS - 800 GPH W/ TIMER
- 1 1/8” STANDPIPE OVERFLOW/DRAINS

- LED LIVEWELL/BAITWELL LIGHTS

21 FS | MARINE GRADE ELECTRICAL SYSTEM

- CIRCUIT BREAKER PROTECTION
- WATERPROOF STAINLESS STEEL TOGGLE SWITCHES
- BATTERY SHUT OFF SWITCH
- DEUTSCH ELECTRICAL CONNECTORS
- SPEEDOMETER, TACHOMETER, AND FUEL GAUGES
- AUTO BILGE PUMP - 750 GPH
- 2 - AERATOR PUMPS - 800 GPH W/ HIGH SPEED PICKUP
- 6-GAUGE TROLLING MOTOR HARNESS

GALLERY



GSPS Marine
3807 Gulf Shores Parkway,
Gulf Shores, AL, 36542
Phone: 251-948-6748