



**GSPS Marine**  
3807 Gulf Shores Parkway,  
Gulf Shores, AL, 36542  
Phone: 251-948-6748

# Avid 20 XB

Boat Type: Bass Boat



## OVERVIEW

## 20 XB | SPECIFICATIONS

Length	20'39; 1"
--------	-----------

Beam	97"
------	-----

Transom Height	20"
----------------	-----

Max Horsepower	200 HP
----------------	--------

Side Height	
-------------	--

	24"
Bottom Width	69"
Approximate Draft	11"
Aluminum - 5052 Gauge	0.125
Approximate Boat Weight	1,594 lbs
Fuel Capacity	32 Gallons*
Divided Livewell	25 Gallons
Aft Storage Boxes	50 Quarts Each
Forward Insulated Cooler/Day Box	37 Quarts
Persons and Total Persons Weight	4/750 lbs
Max Weight Capacity	1760 lbs

## SPECIFICATIONS

### Basic Information

Manufacturer:	Avid	Boat Type:	Bass Boat
Model:	20 XB	Hull Material:	
Year:	2020	Hull Type:	
Category:	Power		

Dimensions & Weight

Length:	20.00 ft	Draft - max:	0 ft 11 in - 0.28 meter
LOA:	20 ft 1 in - 6.12 meter	Bridge Clearance:	-
Beam:	8 ft 1 in - 2.46 meter	Dry Weight:	1594 ft
Deadrise Aft:	-		

Tank Capacities

Fuel Tank:	32 gallons - 1 tank(s)	Holding Tank:	-
Fresh Water Tank:	-		

Accommodations

Total Cabins:	-	Crew Cabins:	-
Total Berths:	-	Crew Berths:	-
Total Sleeps:	-	Crew Sleeps:	-
Total Heads:	-	Crew Heads:	-
Captains Cabin:	No		

FEATURES

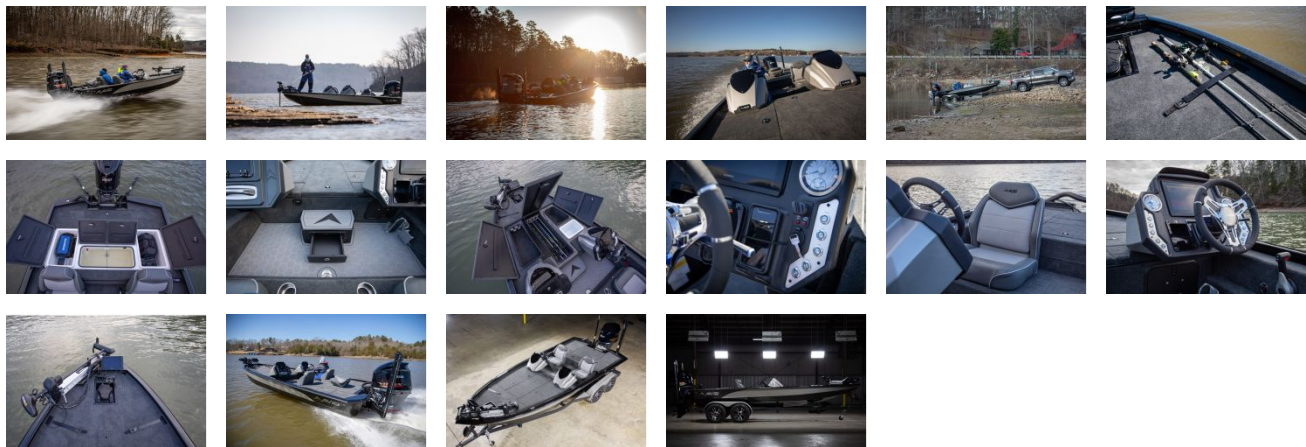
20 XB | CONSTRUCTION

5052 Aluminum alloy featuring Proprietary TruTaper Beam Forward Gunnel.j

20 XB | CONSOLE

Ergonomic color-matched fiberglass console with push button LED switches, USB charge, and room for 12" electronics.

GALLERY



**GSPS Marine**  
3807 Gulf Shores Parkway,  
Gulf Shores, AL, 36542  
Phone: 251-948-6748