



**Annapolis Yacht Sales**  
7350 Edgewood Rd.  
Annapolis, MD 21403  
Phone: 410.267.8181

# Coronado 26 Dual Console

Boat Type: Dual Console



## OVERVIEW

We have taken Doug Zurn's exclusive bow forward design to the next level, creating even more room for movement in the cockpit area and fostering an uncluttered feeling. The cozy and inviting bow seating provides everything you need at your fingertips to enjoy a day on the water. A large L-shape settee aft provides plenty of seating so no one is left behind. The integrated wet bar with your choice of sink or barbeque grill and the enclosed head under the port console ensures that the fun goes on all day. All these features built to our unwavering standard of construction slice through the waves on the famed Coronado hull. This is a boat that is truly in a class of her own.

## SPECIFICATIONS

### Basic Information

Manufacturer:	Coronado	Boat Type:	Dual Console
Model:	26 Dual Console	Hull Material:	
Year:	2021	Hull Type:	
Category:	Power		

## Dimensions & Weight

Length:	26.00 ft	Draft - max:	2 ft 6 in - 0.76 meter
LOA:	26 ft 8 in - 8.13 meter	Bridge Clearance:	-
Beam:	8 ft - 2.44 meter	Dry Weight:	-
Deadrise Aft:	16.00 °		

## Tank Capacities

Fuel Tank:	89 gallons - 1 tank(s)	Holding Tank:	-
Fresh Water Tank:	-		

## Accommodations

Total Cabins:	-	Crew Cabins:	-
Total Berths:	-	Crew Berths:	-
Total Sleeps:	-	Crew Sleeps:	-
Total Heads:	-	Crew Heads:	-
Captains Cabin:	No		

## FEATURES

### CONSTRUCTION

- Vinyl ester epoxy resin hull laminate
- Fully closed cell foam core vacuum bagged to hull and deck
- Wood free, rot free design
- One-piece carbon fiber reinforced hull and deck liner
- Through-bolted hull and deck joint
- Stainless steel through-hulls above water line
- Silicone bronze through-hulls below water line
- Integrated engine bracket and swim platform
- Heavy-duty aluminum fuel tank
- Carbon fiber stringer grid system

### MECHANICAL & ELECTRICAL

- Mercury Smart Craft or Yamaha Command Link
- Digital throttle and shift
- Start and house battery
- Battery switch
- Custom waterproof distribution panel
- Hydraulic steering system
- Edson steering wheel
- Bilge pump with automatic float switch
- Navigation lights
- LED courtesy lights (6)
- ABYC color coded, tinned wiring
- 12-Volt outlet (2)

- USB charging port
- Porcelain fresh water head w/holding tank
- Electric horn

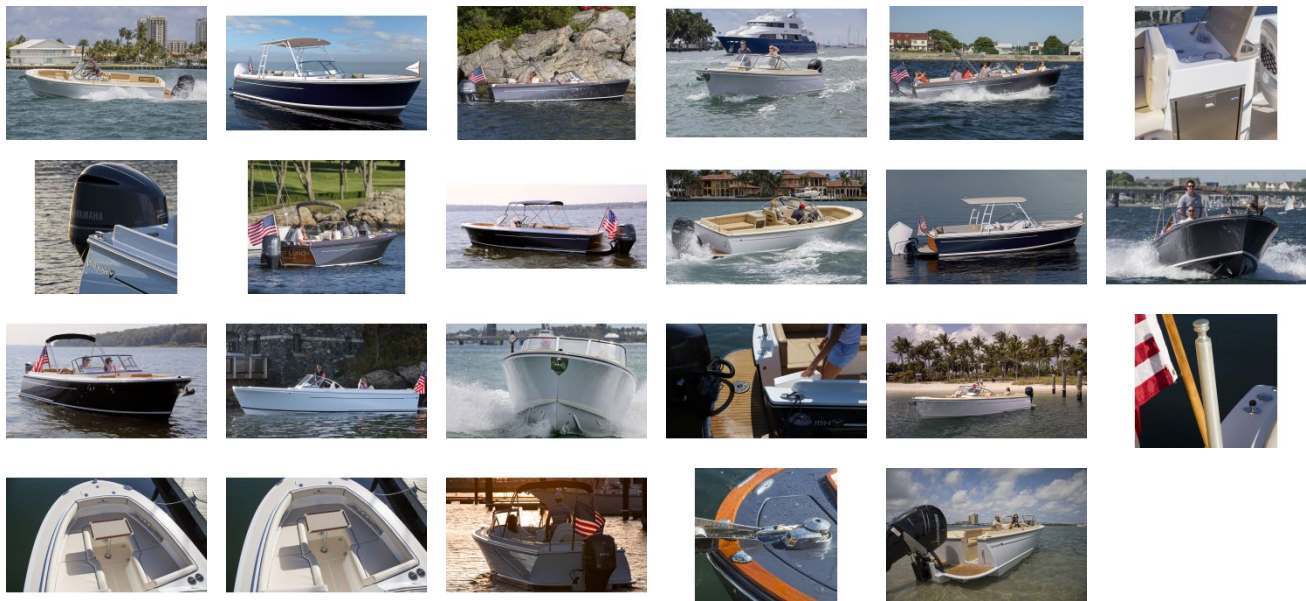
## **HULL & DECK**

- Self-bailing cockpit
- Molded two-tone non-skid decking
- Anchor locker
- Gasket sealed in-floor storage locker (2)
- Removable under-seat storage lockers (5)
- Stainless steel windshield header
- Molded toe-kick
- Molded rub strake
- Stainless steel rub rail
- Swim ladder (retractable 3 step)
- 8" retractable stainless steel cleats (6)
- American flag with teak staff
- Walk-Thru transom door
- Bi fold wind door

## **INTERIOR**

- Bow Seating with removable port and starboard filler cushions
- Wet Bar with fresh water sink
- Nautolex marine grade vinyl or Sunbrella upholstery
- Recessed drink holders (13)– stainless steel
- Drink holders Ring stile (6)
- Flip-up bolster captain and co-captain seats
- Stainless steel grab handles (7)
- lockable storage box

GALLERY



**Annapolis Yacht Sales**  
7350 Edgewood Rd.  
Annapolis, MD 21403  
Phone: 410.267.8181