



Jefferson Beach Yacht Sales
24400 Jefferson Avenue,
St. Clair Shores, MI 48080
Phone: 866-490-5297

Sailfish 360 CC

Boat Type: Center Console



OVERVIEW

This fishing machine is just as well-suited for offshore adventures as it is for family fun. Check out the 360CC in action. Sailfish Boats produces center console boats using state-of-the-art technology and advanced engineering to provide the industry's best family-friendly, fishing focused boats. We design each boat with the customer in mind to provide a boat that families and anglers will enjoy for years to come. Take your fishing and family excursions to the next level with Sailfish Boats.

SPECIFICATIONS

Basic Information

| | | | |
|---------------|----------|----------------|----------------|
| Manufacturer: | Sailfish | Boat Type: | Center Console |
| Model: | 360 CC | Hull Material: | Fiberglass |
| Hull Type: | | Category: | Power |

Dimensions & Weight

| | | | |
|---------------|--------------------------|-------------------|------------------------|
| Length: | 36.00 ft | Draft - max: | 2 ft 4 in - 0.71 meter |
| LOA: | 38 ft 6 in - 11.73 meter | Bridge Clearance: | 9 ft 10 in - 3 meter |
| Beam: | 11 ft 2 in - 3.4 meter | Dry Weight: | 12700 ft |
| Deadrise Aft: | 22.00 ° | | |

Tank Capacities

| | | | |
|-------------------|-------------------------|---------------|---|
| Fuel Tank: | 400 gallons - 1 tank(s) | Holding Tank: | - |
| Fresh Water Tank: | - | | |

Accommodations

| | | | |
|-----------------|----|--------------|---|
| Total Cabins: | - | Crew Cabins: | - |
| Total Berths: | - | Crew Berths: | - |
| Total Sleeps: | - | Crew Sleeps: | - |
| Total Heads: | - | Crew Heads: | - |
| Captains Cabin: | No | | |

FEATURES

BOW

- 12 Volt DC Accessory Plug
- Bow Shower
- Fully Upholstered Convertable Bow Seating and Lounge Area w/ Power Adjustable Table/Bow Filler and Fold-Away Forward Facing Backrests
- SST Low Profile Bow Rail
- Twin insulated 80qt. Storage Boxes

ELECTRICAL

- 8 Spreader Lights w/ Four Way Control
- Accessory Switch Panel w/Circuit Breakers
- Built-In 4 Bank Battery Charger w/ LED Readout
- Compass
- Dock Side Power
- Fully NEMA Compliant
- Fusion Transom & Bow Remote Control
- Fusion/Wet Sounds Stereo System & USB Port
- LED Anchor Light
- LED Interior Cockpit & Bilge Lighting
- LED Navigational Flip Up Bow Light
- Lumitec Underwater LED Lighting

- Multiple 12 Volt DC Accessory Plugs
 - Push To Start Engines
 - SST Refrigerator
 - VSR Battery Charging System
-

PLUMBING

- Automated Motor Flushing System
 - Automatic Bilge Pump (2 - 2000 GPH Aft - 750 GPH Forward)
 - Concealed Electric Marine Head w/ Overboard Discharge
 - Freshwater Stations (4) - (Transom, Leaning Post, Bow and Berth)
 - High Speed Livewell Pickup
 - On Deck Water Management System
 - Retractable Raw Water Wash Down
 - Self Bailing Cockpit (w/2 6" Oval Scupper Drains with Collector Box)
-

HARDWARE

- Fender Cleats (4)
 - Flush Mount Hinges, Latches & Deck Plates
 - Heavy Duty SST Bow & Stern Eyes
 - Heavy Duty SST Rub Rail
 - Sailfish Engraved Transom Plates
-

SEATING

- 60" Hide-a-way Rear Seating
 - Bow Bottom and Backrest Cushions
 - Chase Lounge Seating w/ Fold Down Arm Rests
 - Leaning Post w/ 3 person Helm Seating and 3 Person Aft Facing Seat w/ Flip Down Armrest & Cup Holders, Cooler, Fridge, Storage, Powered Driver's Seat Slide and Landing for rear Facing Bottom Machine
-

HELM

- Acrylic Dash Panel on Console
- Adjustable Height Standing Driving Position
- Comfort Zone Anti-Fatigue Pad
- Console Footrest

- Deluxe Walk In Console Berth (Lockable) w/ SST Port Light
 - Glass Enclosure w/Vent, Wiper & Windshield Washer
 - Large Dash Area (Capable of flush mounting Twin 16" Screen or Triple 12" Screens)
 - Overhead Engine Monitor
-

HEAD

- Corian Counter Tops
 - Fresh Water SS Sink
 - Pilot's Berth
 - SST Port Light
 - Stand-up Shower w/ Curtain
 - Wood Framed Mirror, Wood Steps & Cabinetry
 - Yacht Style Flooring
-

STORAGE

- Console Top Tackle Organizer (CTO)
 - Dash Storage Pocket
 - Engel 80qt. Carry-On Cooler
 - LP Glove Box w/ Charging Station
 - Recessed Rod Storage - Port & Starboard
 - Tackle Storage Port & Starboard
 - Twin 260 qt. Insulated Aft Fish Boxes
 - Twin Hard Top Storage Boxes
 - Under Gunwale Storage
-

FISHING

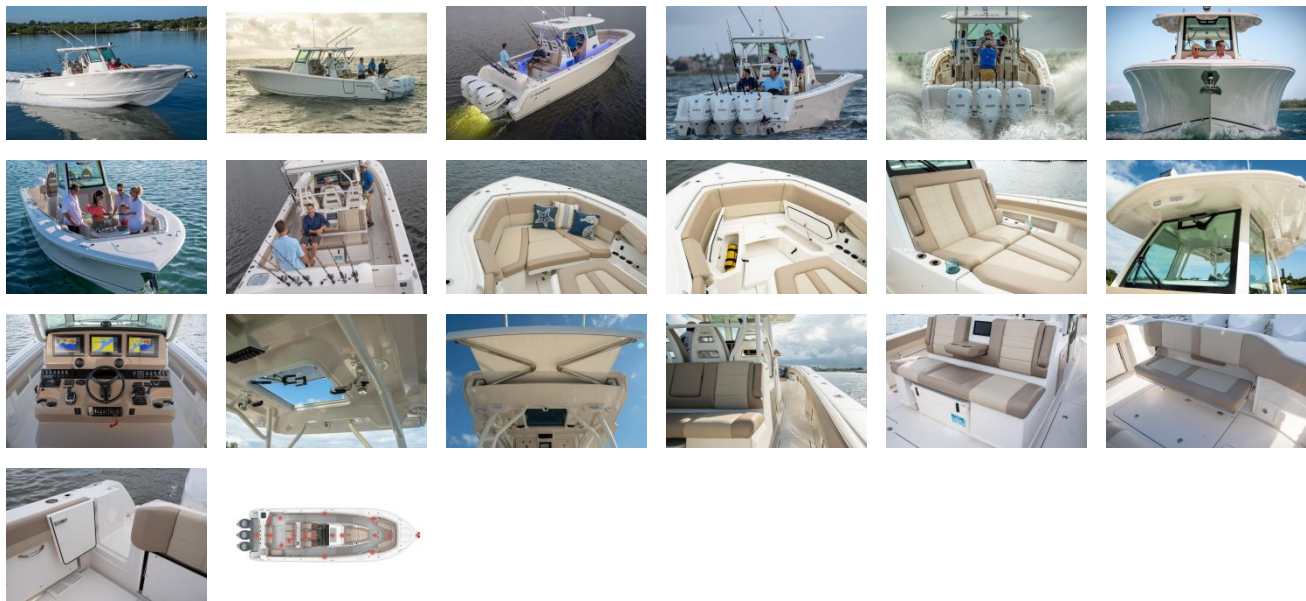
- 42 & 32 Gallon Pressurized Circulating Baitwells
 - Built-In Tackle Storage
 - In-Floor Fish Boxes (w/ Advanced Vacuum Pump)
 - Sea Chest Baitwell Pump System
-

BOAT

- 3 Piece Construction w/ Cored Hull Sides
- Backing Plates for Radar and VHF Mounts in Hard Top

- Boarding Ladder (4 step w/ grab handle)
- Built In Rigging Tubes (From Bilge to Helm with pull tapes)
- Carbon Fiber & Kevlar® Reinforced Deck & Hull
- Closed Cell Foam Flotation
- Cockpit Toe Rails
- Easy Access Electronics and Rigging Area
- Edson Black Ops Steering Wheel w/ Deluxe Grip & Power Knob
- Exclusive Dot Matrix Non-Skid Flooring
- Exclusive VDS Hull Design (Variable Deadrise Stepped Hull)
- Hard Top w/ Vented Sun Roof, Articulating Rear Shade
- Insulated Locking Coffin Box Storage
- Integrated D Channel Hard Top Frame
- Oversized Bilge Access
- Power Assist Steering
- Port Side Dive Door w/ 4 Step Folding Ladder
- Recessed SST Cup Holders (14)
- Recessed SST Cup Holders (6 - 32 oz.)
- SailTech Composite Full Length Transom
- SailTech Foam Filled Fiberglass Stringer System
- Thru Hull Windlass System
- Trim Tabs / High Performance Dual Ram / Heavy Duty With Indicator & Built In Auto Retract Feature
- VesselView 703 (Mercury Motors Only)
- Walk-Thru Transom Door with Wave Guard Step

GALLERY



Jefferson Beach Yacht Sales
24400 Jefferson Avenue,
St. Clair Shores, MI 48080
Phone: 866-490-5297