



East Coast Yacht Sales

No Address entered

Phone: 555-555-5555

Axopar 22 Spyder

Boat Type: Center Console



OVERVIEW

The cool-looking Axopar 22 Spyder is a true driver's boat, offering first-in-class handling, seaworthiness and safety, combined with the efficiency and comfort that its bigger 28ft and 37ft siblings are renowned for.

A smart boat that packs a punch and will turn heads wherever you go, and all without breaking the bank!

A boat that is capable of commuting comfortably in changeable conditions and remains predictable and logical in its behaviour, no matter what weather conditions are thrown at it! With Axopar, it's about offering in-built safety and total peace of mind.

With a good spread of deck options for configuring the boat precisely to each customer's needs, anyone searching for a meaningful upgrade, for example from a smaller 6 to 7 metre boat, will love the idea of moving up to a more mature, better handling hull; one that has been designed to deal with higher average cruising speeds and a wider range of sea conditions.

At Axopar we want our customer's first experience of boating to be a good one, so we have designed a hull that is safe, stable, and unthreatening, but at the same time fun, comfortable, thrilling and rewarding to drive. By

implementing a classic Axopar hull in a smaller size, the outcome is a boat that is easy to manoeuvre in tight spaces with minimum windage impact.

Three different aft deck layouts are available at launch, including a large U-shaped sofa for six people, a multi-storage compartment with seating (either for four seated sideways or two facing forward), or a forward-facing rear bench for two-persons as standard. An optional enclosed toilet at the front of the centre console makes this a perfect proposition for families and guests of all age groups.

As standard the Axopar 22 Spyder comes with an open aft deck equipped with a forward-facing rear bench. The aft deck can also be equipped with a U-sofa layout or a multi storage compartment.

SPECIFICATIONS

Basic Information

Manufacturer:	Axopar	Boat Type:	Center Console
Model:	22 Spyder	Hull Material:	
Year:	2021	Hull Type:	
Category:	Power		

Dimensions & Weight

Length:	22.00 ft	Draft - max:	2 ft 8 in - 0.81 meter
LOA:	24 ft 8 in - 7.52 meter	Bridge Clearance:	-
Beam:	7 ft 4 in - 2.23 meter	Dry Weight:	-
Deadrise Aft:	-		

Tank Capacities

Fuel Tank:	60 gallons - 1 tank(s)	Holding Tank:	-
Fresh Water Tank:	-		

Accommodations

Total Cabins:	-	Crew Cabins:	-
Total Berths:	-	Crew Berths:	-
Total Sleeps:	-	Crew Sleeps:	-
Total Heads:	-	Crew Heads:	-
Captains Cabin:	No		

FEATURES

Hull and deck

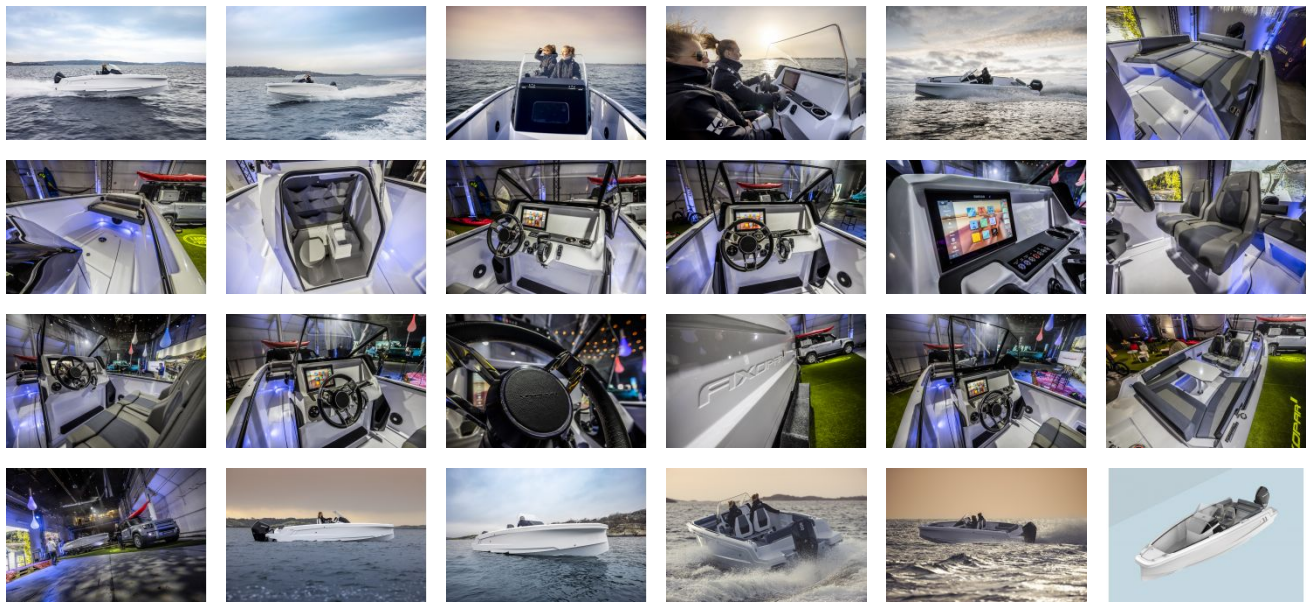
Walk-around center console deck layout w. enclosed aft deck, Large center console w. storage/optional toilet compartment, Mid sofa w. lockable storage below on aft deck, Hand laminated hull with Vinylester resin for the first

coat for osmosis prevention of the hull in GRP material, Twin-stepped hull w. "sharp entry bow", Integrated engine bracket in hull for outboard engines, Fixed aluminum fuel tank 230l w. overflow prevention, Anti-skid finishing on deck areas and hatches, Self-draining deck area w. quick drain aft deck, All hardware, locks, hinges, filler caps & grab rails in 316 stainless steel or powder coated black, 4 x cleats, Bow & stern eyes 316 stainless steel, LED navigation lights on fore deck, removable anchor light, Spacious anchor locker w. drainage in bow, Rope holders in anchor locker on fore deck & aft sofa, Windscreen in plexi glass w. black rasterization, wind deflectors on center console, In floor fore deck storage, Large in floor aft deck storage compartment w. gas strut assisted hatch, Storage on side panels, Battery tray w. mount & splash proof main fuses in aft sofa storage, Signal horn, Two electric bilge pump w. auto-function, Manual bilge pump, Integrated swim platforms and concealed telescopic bathing ladder.

Helm & Cockpit Features

Clean - Helm layout, Dashboard panel in dark grey soft touch finish, Control switch panel in high gloss black w. illuminated push buttons, Steering wheel in leather w. Axopar logo, Two front seats, w. swivel, length adjustable w. flip-up high-rise bolster, Silvertex Sterling on all seats and upholstery, Two beverage holders, Splash proof USB outlet in the console, Threshold free cockpit area, Footrest with anti-skid finishing, Large harbour cover for console and front seats

GALLERY



East Coast Yacht Sales
No Address entered
Phone: 555-555-5555