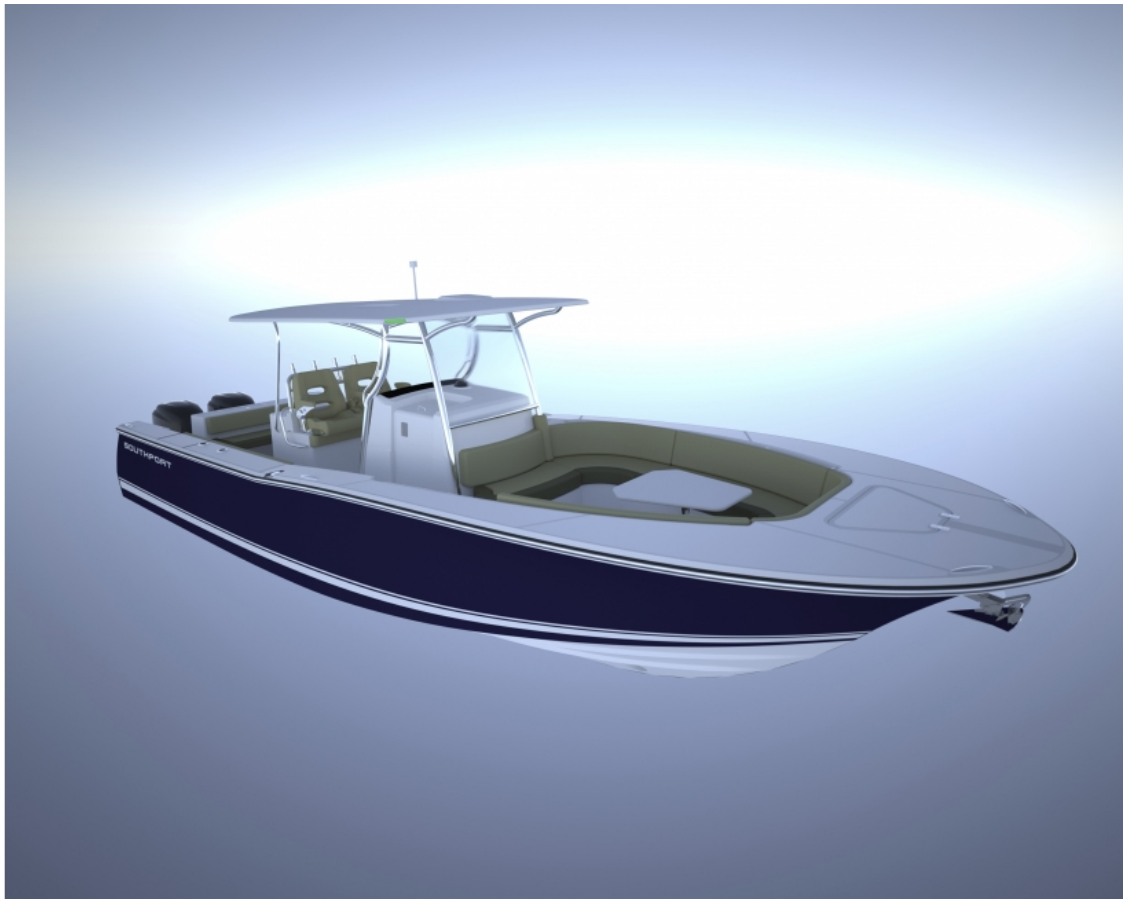




DimillosYacht Sales
1 Long Wharf, Portland, ME 04101
Phone: 207-773-7632

Southport Southport 33 LX

Boat Type: Center Console



OVERVIEW

Southport Boats Announces New Model on Popular 33-foot Platform

Southport Boats of Augusta, Maine has announced a new model on their 33-foot platform, the Southport 33 LX. The totally new deck plan of the LX will offer all the comforts and conveniences of a day cruising powerboat or fine yacht tender, coupled with the ride of a Southport.

The most noticeable feature of the new 33 LX will be a forward 270-degree wraparound pit seating area on the port side, which will create a comfortable and welcoming forward lounge area. It is Southport's answer to the space and sociability of a dual console, while still maintaining the centerline operation, visibility and functionality of a center console. As a result of this new arrangement the boat will feature more tender-like amenities, including extra refrigeration, a microwave, coffee maker, plus food and beverage storage and preparation areas – a summer galley.

Additionally, the aft cockpit, a place once reserved for fishing, will now become a far more inviting place to entertain and relax. With the addition of an L-shaped wrap-around lounge in the aft port corner and wet-bar with refrigerator

and bottle and glass storage in the leaning post, the aft cockpit will rival the front of the boat for comfort and social amenities.

The 33 LX was the next obvious step for Southport, who saw their 33 platform take off, with nearly 30 ordered and built in just the first two years of production. "The 33 was a real game-changer for us" said Skip Robinson, Managing Director of Southport Boats. "It was always envisioned as a fishing or 'fishable' boat, but once people saw the cruising options we could deliver on that platform they wanted more".

The 33 LX will debut at the Newport and Fort Lauderdale Boat shows in September and November, respectively, as well as numerous smaller shows throughout the fall.

SPECIFICATIONS

Basic Information

Manufacturer:	Southport	Boat Type:	Center Console
Model:	Southport 33 LX	Hull Material:	
Year:	2019	Hull Type:	Deep Vee
Category:	Power		

Dimensions & Weight

Length:	33.00 ft	Draft - max:	1 ft 10 in - 0.56 meter
LOA:	32 ft 6 in - 9.91 meter	Bridge Clearance:	-
Beam:	10 ft 8 in - 3.25 meter	Dry Weight:	7300 ft
Deadrise Aft:	22.00 °		

Tank Capacities

Fuel Tank:	300 gallons - 1 tank(s)	Holding Tank:	12 gallons - 1 tank(s)
Fresh Water Tank:	30 gallons - 1 tank(s)		

Accommodations

Total Cabins:	-	Crew Cabins:	-
Total Berths:	-	Crew Berths:	-
Total Sleeps:	-	Crew Sleeps:	-
Total Heads:	-	Crew Heads:	-
Captains Cabin:	No		

FEATURES

STANDARD EQUIPMENT PACKAGE

POWER

• Twin Yamaha 300 HP 4.2L Four-Stroke Outboards with Command Link Plus Rigging System (Twin 350 HP 5.3L Four-Stroke Outboard Option Available)

DESIGN

- Exclusive Hunt 4 Design® Provides a Safe, Soft, Dry Ride, Stable Platform, and Easy Handling
- Specifically Designed for Optimal Hull Performance by C. Raymond Hunt Associates
- Continuously Variable Deep Vee Hull Design with 22 Degree Transom Deadrise
- Reverse Transom with Tumblehome Aft
- Graceful Carolina Bow with Generous Flare and Aggressive Forward Rake

SAFETY

- Single Level Cockpit Design
- Primary (1100 GPH) and Secondary 2000 GPH) Bilge Pumps with High Water Alarm
- High-Grip Non-Skid Fiberglass Deck and Liner
- Self-Bailing Cockpit with Four Large Transom Scuppers
- Gasketed In-Deck Storage Compartments
- Through Bolted 316 Stainless Steel Grab Rails
- Transom Door with Heavy-Duty Latch
- 27.5" Deep Cockpit with Stainless Steel Toe Rails and Gunwale Bolsters
- Emergency Boarding Steps
- Low-Profile Weather-Resistant Horn

CONSTRUCTION

- 100% Composite Construction (No Wood)
- Solid Vinylester Vacuum-Infused Hull
- High-Density Integrally Infused Composite Transom
- Four-Piece Construction with Foam-Filled Composite Grid Stringer System
- Hull, Stringer System, and Cockpit Liner are Chemically Unit-Bonded with Plexus® Structural Adhesive
- Non-Skid Fiberglass Cockpit Liner with Large Straight Line Transom Scuppers
- Through Bolted 316 Stainless Steel Hardware
- Polyethylene Fuel Tank in Enclosed Fiberglass Chamber (300+ Gallons)
- A.B.Y.C. Approved Non-Corrosive Marelon® Through-Hull Valves

ELECTRICAL

- Dedicated Port and Starboard Engine Starting Batteries
- Dedicated House Batteries (2) Group 31 AGM
- Emergency Battery Crossover Capability
- Easy Access Battery Switching

COCKPIT AND DECK

- Aft Port & Starboard Insulated In-Deck Fishbox/Dry Storage (6" x 75 Gallons Each)
- Plush Aft Fold-Down Seat (Extended Width Available)
- Electric Windlass with Galvanized Plow Anchor, 300' Rode and 10' Chain
- Stainless Steel Bow Anchor Guard
- Recessed Stainless Steel Deck Grab Rails
- Suede-Like Textured Finish on All Soft Goods
- Port and Starboard Under-Gunwale Storage Boxes
- Forward Guttered Storage Locker
- Transom Livewell (35 Gallons); Leaning Post Livewell Option Available
- Pull-Up Stainless Steel Cleats (6)
- Recessed Pop-Up Bow Light
- LED Cockpit Courtesy Lights

- Flush-Mounted Stainless Steel Rod Holders. (6) on FE and (8) on TE
- Forward and Aft Under-Gunwale Horizontal Rod Racks (6)
- Pressurized Saltwater Washdown
- Pressurized Freshwater Washdown
- Aft Deck Pull-Out Freshwater Shower
- Straight Line Transom Scupper System
- Forward and Aft Cockpit Bolsters
- Starboard Side Dive Door (Optional) with Stainless Steel Dive Ladder (Optional)
- Starboard Side Transom Door
- Stainless Steel Boarding Ladder
- Easy Bilge Access

CONSOLE

- Lockable Stand-Up Head Enclosure with Flip-Up Entry Hatch
- Stainless Steel Portlight
- Solid-Surface Countertop with Stainless Steel Sink
- Pull Out Freshwater Shower Head with Sump Pump
- Six-Foot-Long Berth/Storage Area
- Freshwater Marine Head with 12 Gallon Holding Tank and Macerator
- Lockable Drawer with USB Stereo Inputs
- Fusion® Stereo System with Four Speakers and Antenna/Receiver with Bluetooth Capabilities
- Vertical Rod Storage Holders in Head (6)
- Console Mirror with Electrical Gauge Panel Access
- Dual Binnacle Controls
- Cushion Grip Edson® Steering Wheel with Power Knob
- Console Gauge Panel Accommodates the Latest and Largest Dual Electronic Displays
- Weather Resistant Rocker Switch Panel
- Teleflex Tournament Edition Steering with Power Assist
- Hydraulic Tilt Steering System
- Accessory 12V Outlets (2)
- Ritchie® Navigator Compass on Mounted Compass Pad
- Stainless Steel Cup Holders and Storage Shelf
- Console Storage Under Helm

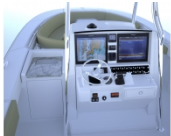
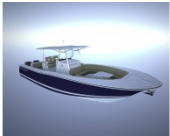
T-TOP

- Heavy Duty Aluminum Frame Powder Coating Available)
- Rugged Composite Top
- Fore and Aft Facing LED Flood Lights
- Multi-colored LED Overhead Lights (3)
- Integrated Outrigger Plates
- Acrylic Windshield
- Windshield Wiper with Freshwater Rinse

LEANING POST/LIVEWELL RIGGING STATION

- Deluxe Helm Seats with Flip-Up Bolsters and Footrests
- Leaning Post Side Storage Compartments
- Leaning Post Rig Hanging Bars
- 45 Gallon Livewell with Light and 1100 GPH Pump
- Tackle Storage Compartments (3)

GALLERY



DimillosYacht Sales
1 Long Wharf, Portland, ME 04101
Phone: 207-773-7632