



**McMichael Yacht Brokers**  
447 East Boston Post Road  
Mamaroneck, NY 10543  
Phone: 877.606.0401

# J Boats J/111

Boat Type: Racer and Cruiser



## OVERVIEW

### A Fast 36' One-Design with Comfy Cockpit & Speed to Burn

Every now and then a new sailboat comes along that fulfills a real need in the market. Many of them have been J-Boats. Hot off the drawing board, the J/111 is a sleek, speedy, one-design 36 footer that is the ultimate day sailing, racing and weekend cruising sailboat.

J/111 is an easy-to-handle, comfortable sailboat that accelerates quickly, slices to windward at 7+ knots and hits double-digit speeds downwind. Performance to date in a wide variety of sailing conditions has been nothing short of remarkable.

## SPECIFICATIONS

### Basic Information

Manufacturer:	J Boats	Boat Type:	Racer and Cruiser
Model:	J/111	Hull Material:	Fiberglass
Year:	2017	Hull Type:	Monohull
Category:	Sail		

### Dimensions & Weight

Length:	36.00 ft	Draft - max:	7 ft 2 in - 2.19 meter
LOA:	36 ft 5 in - 11.1 meter	Bridge Clearance:	-
Beam:	10 ft 9 in - 3.28 meter	Dry Weight:	9300 ft
Deadrise Aft:	-		

### Tank Capacities

Fuel Tank:	18 gallons - 1 tank(s)	Holding Tank:	12 gallons - 1 tank(s)
Fresh Water Tank:	26 gallons - 1 tank(s)		

### Accommodations

Total Cabins:	-	Crew Cabins:	-
Total Berths:	-	Crew Berths:	-
Total Sleeps:	-	Crew Sleeps:	-
Total Heads:	-	Crew Heads:	-
Captains Cabin:	No		

## FEATURES

### Efficient, Comfortable Cockpit.

Sailors spend more time in the cockpit than anywhere else, and this is where the J/111 shines. There's comfortable seating (with backrests) for six, easy movement afoot with floor mounted traveler and well positioned foot braces, an open transom for easy boarding, and large 60" wheel so the driver can comfortably sit on the high or low side, on any point of sail, yet still see the telltales and waves. All principal controls are led aft and the driver can adjust the mainsheet, traveler and backstay from the helm position. An optional dodger is available to give the crew additional weather protection to extend the season.

### Spacious Cruising Interior.

The J/111 has all the essentials below for comfortable overnights and short cruises. The main cabin features an open layout with L-shaped galley, forward facing nav station, a wet locker and two full length settee berths with option for additional fold-up sea-berths. Six can comfortably sit for dinner. Two spacious aft quarter berths are standard, as well as a private forward head and removable V-berth.

## Less Crew = More Sailing.

Sailboats that are easier to sail are sailed more often. It's that simple. The J/111 is the latest "sport boat" one-design from the company who introduced modern-day sprit sailing to the keelboat world (J/105 in 1991).

A crew of two can fully manage the setting, jibing and dropping of the asymmetrical spinnaker where normally 5-6 are required to manage a conventional spinnaker. With a mainsail on slides, a furling jib and large wheel that gives you fingertip control, the J/111 can be off the dock and sailing in minutes.

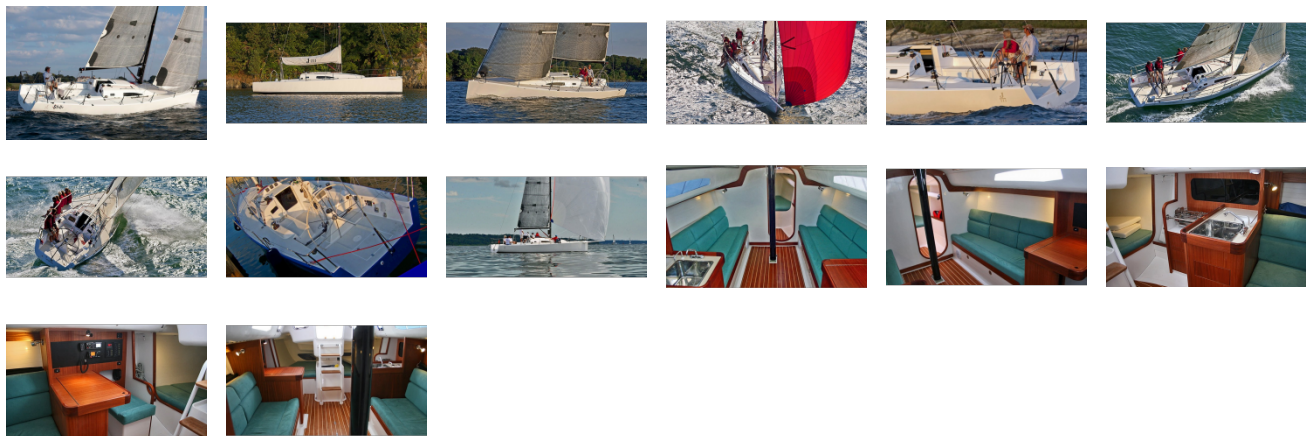
This is a boat you can sail with friends and do it with confidence and ease. With the J/111, one's fun is not limited to coastal sailing. Whether double-handing to Mackinac, soloing to Bermuda or flying down the Baja coast with full crew, you can sail the J/111 with complete confidence and control

Hull & Deck Construction	<ul style="list-style-type: none"><li>- Balsa core/biaxial E-glass vacuum infused hull laminate. Corecell/biaxial E-glass deck laminate. Engineered and built to current ISO and ABS structural standards.</li><li>- White gel coat hull with single bootstripe.</li><li>- Molded companionway slide-in seahood.</li><li>- ORC size molded foredeck toe-rails.</li><li>- GRP molded main structural bulkhead, bonded fore &amp; aft on hull and deck with single opening to forepeak.</li><li>- Fore/aft and transverse keel support beams.</li><li>- Composite mast bearing beam with integral plate to secure mast step.</li></ul>
Keel & Rudder	<ul style="list-style-type: none"><li>- High aspect two-metal racing keel with lead bulb and stainless fin, flange mounted to a covered hull recess.</li><li>- Balanced high aspect rudder constructed using "E-glass" with custom carbon rudder shaft mounted in self aligning rudder bearing system.</li><li>- 60" wheel with grey leather cover recessed in molded cockpit wheel well.</li><li>- Steering system including idler sheaves, 6.5" radial drive, needle bearing with integral wheel brake, and chain/wire cables.</li><li>- Emergency tiller.</li></ul>
Spars & Rigging	<ul style="list-style-type: none"><li>- Autoclaved carbon fiber mast with double set of tapered aluminum spreaders, backstay crane, flush shroud terminations, sheaves for main, 2 jib &amp; 2 spinnaker halyards, vang and boom gooseneck fittings, steaming light, internal wiring conduit, pre-formed mast wedge kit. Mast/boom finished in black with contrasting white measurement bands. White finish optional.</li><li>- Alloy 6061-T6 Boom with 12:1 internal outhaul, two mainsheet block bales, vang lug, three sheaves for reef lines and outhaul.</li><li>- Nitronic 50 discontinuous rod standing rigging package including shrouds and forestay.</li><li>- Calibrated shroud turnbuckles.</li><li>- Dyneema DSK-78 Backstay.</li><li>- Remote hydraulic backstay system mounted within reach of helmsman on front face of wheel pedestal.</li><li>- Low-profile headsail furling system with control line aft to port side of cabin trunk.</li><li>- Carbon fiber, retractable bow sprit with internal bearing system painted black.</li><li>- Hall running rigging package.</li></ul>

Deck Hardware	<ul style="list-style-type: none"> <li>- 46:1 self-tailing primary winches.</li> <li>- 40:1 self-tailing cabin top winches.</li> <li>- (2) 10" winch handles.</li> <li>- Two winch handle holders.</li> <li>- Two-speed Mainsheet System with 6:1 rough tune purchase to swivel cam base &amp; 24:1 fine tune purchase led to centerline ratchet cam.</li> <li>- 4:1 Traveler System – led P&amp;S.</li> <li>- 6:1 Adjustable Jib Lead System.</li> <li>- Jib in-hauler hardware &amp; 4:1 tackle P&amp;S.</li> <li>- 6:1 Cunningham system.</li> <li>- Blocks for spinnaker sheet and tack line.</li> <li>- Bow-sprit control system led internally to cockpit mounted cam cleat.</li> <li>- Mast base halyard blocks and Spinlock 4-sheave organizers P&amp;S.</li> <li>- Halyard &amp; tack line rope clutches.</li> <li>- Custom SS mast collar with pins for halyard blocks and halyard bale.</li> <li>- Stainless cabin top handrails P&amp;S.</li> <li>- Tapered lifeline stanchions.</li> <li>- Double lifelines to meet ORC offshore regulations with 9" lower lifeline height.</li> <li>- Custom bow pulpit and dual corner stern rails with LED navigation lights.</li> <li>- Four 8" 4-bolt SS mooring cleats.</li> <li>- Four SS padeyes for cockpit spinnaker blocks.</li> <li>- Interior ventilation from two framed opening ports in sides of cabin trunk and offshore style forward skylight deck hatch above V-berth (option for two opening ports on aft cabin face).</li> <li>- Acrylic offshore drop-board with key lock and inside operable latch/unlatch.</li> <li>- Cockpit operated manual bilge pump.</li> <li>- Two 12"x 20" polypropylene mesh line bags.</li> <li>- Custom SS stemhead, shroud and backstay chainplates.</li> </ul>
Auxiliary Power	<ul style="list-style-type: none"> <li>- Yanmar 3YM20 3 cylinder 4-stroke 21hp diesel engine with 60 amp alternator and SD 20 saildrive with 2-piece split zinc.</li> <li>- Yanmar engine instrument panel mounted in recess on cockpit wall near wheel</li> <li>- 16 x 11 diameter geared folding prop.</li> <li>- Engine throttle control with neutral safety switch.</li> </ul>
Systems	<ul style="list-style-type: none"> <li>- 18-gallon fuel tank with baffles and inspection/clean out port.</li> <li>- 12-gallon head holding tank.</li> <li>- Marine head with Y valve and deck pump-out access.</li> <li>- 26-gallon water tank.</li> <li>- Manual fresh water foot pumps in head and galley.</li> <li>- 90 amp deep-cycle, sealed AGM battery.</li> <li>- Three position battery switch.</li> <li>- Electrical panel w/circuit breakers.</li> <li>- LED Navigation lights to meet COLREGS.</li> <li>- Bonding system.</li> <li>- Six reading lights.</li> <li>- One adjustable nav light.</li> <li>- Two red/white LED dome lights</li> <li>- One fluorescent light in head.</li> <li>- Automatic bilge pump &amp; panel switch for manual/auto operation.</li> </ul>

Interior	<ul style="list-style-type: none"> <li>- Off-white low-maintenance bulkheads.</li> <li>- Molded engine box cover with 1" sound insulation.</li> <li>- Powder-coated aluminum companionway ladder w/teak treads.</li> <li>- Twin 6'9" quarter berths aft of the galley/nav area with storage below.</li> <li>- Main bulkhead privacy door.</li> <li>- Teak and holly style synthetic high-wear cabin flooring.</li> <li>- SS overhead handrails in main salon P&amp;S.</li> <li>- Two Large acrylic fixed portlights.</li> <li>- 6'4" settee berths with backrests (fold-up pilots optional).</li> <li>- Shelf outboard of settee berths with storage behind backrest cushions.</li> <li>- Nav Station/Office with full leg room, hinged-lid access to chart storage, outboard instrument panel and storage bin.</li> <li>- L-Galley with sink, faucet, fresh water foot pump, sink drain seacock, ice box with top opening, two-burner alcohol stove and storage cabinet outboard.</li> <li>- Head compartment with sink and outboard storage to port and large sail/tool storage bin to starboard.</li> <li>- Choice of nylon fabrics for interior cushions.</li> </ul>
Options	<ul style="list-style-type: none"> <li>- Two tone deck.</li> <li>- 1/2" Cove stripe to match boot stripe.</li> <li>- Additional 90 amp battery.</li> <li>- Opening ports on aft face of cabin house (2).</li> <li>- Cockpit dodger with side curtains.</li> <li>- Main cabin fold-up pilot berths.</li> <li>- Wide-opening lifeline gates (P and/or S).</li> <li>- Spar Package finished in white.</li> <li>- 110 VAC Shore Power system with 30' cord, 2 outlets, 20 amp battery charger, equipment leakage circuit interrupter (ELCI), and galvanic isolator.</li> <li>- DC Refrigeration (requires 2nd battery option).</li> <li>- Black Powder Coated Wheel, Stanchions and bow/stern rails.</li> <li>- Quattro Secondary Winches in lieu of standard.</li> <li>- LPG 2 burner cook top stove and cockpit LPG locker with 6lb tank, in lieu of standard.</li> <li>- Removable V-Berth with platform, cushions and two reading lights.</li> <li>- Varnished main cabin table with stainless base.</li> <li>- Fiberglass molded cockpit locker storage liners (2) installed in locker openings.</li> </ul> <p>Comfort Group Package:</p> <ul style="list-style-type: none"> <li>- Cockpit seat and helmsman cushions (4 piece set); Sunbrella covered lifeline covers (4 piece set); mainsail cover in Sunbrella with J/111 Logo.</li> </ul> <p>Interior Trim Package:</p> <ul style="list-style-type: none"> <li>- Varnished wood trim along top and bottom of main bulkhead (in salon area) and varnished wood main bulkhead door.</li> </ul> <p>Systems Group Package:</p> <ul style="list-style-type: none"> <li>- Hot &amp; Cold Pressure Water system; Cockpit Shower.</li> </ul>

GALLERY



**McMichael Yacht Brokers**  
447 East Boston Post Road  
Mamaroneck, NY 10543  
Phone: 877.606.0401