



**North Point Yacht Sales**  
7330 Edgewood Road  
Annapolis, MD 21403

Phone: 410-280-2038

# MJM Yachts 34z

Boat Type: Express Cruiser



## OVERVIEW

### 34z

Perfect Size. 34z is ideal for a couple downsizing from larger power or sail: Still large enough a yacht to seat 3 couples in protected comfort and for safe passage in offshore waves, yet light and narrow enough for unassisted docking and single-handed operation. This is truly a powerboat that will keep people boating together through shared adventures on almost a daily basis.

Express offers an alternate styling with the opportunity to provide additional solid-glass protection for rougher water, higher speed operation while still have the flexibility to open up the sides, back and windshields for optimum control of ventilation. Apart from the design of these pilothouse side windows, the Downeast and Express models are alike.

### Year-Round Joy

Thanks to a beam of less than 12 feet, height with radar under 13.5 feet loaded on a trailer, and 10,600 lbs. ½ load

displacement: 34z is large enough for comfortable offshore passage-making and cruising -- yet readily transportable by road (with permits) between a winter residence south and a summer vacation cottage north.

#### Twice the Fun on Half the Fuel

Cruising 25 knots (29 mph) at 2800 rpm with a 440 hp diesel, 34z burns only 12-14 gallons per hour while similar-size powerboats would be burning 20-30 gph. In an era of rising fuel prices, that is remarkable. Average fuel use over the course of several weeks is usually in the 4-5 gallons per hour range. \$100 for the day instead of \$200 on other 34-36 footers can be the difference between enjoying it and letting it sit in the slip.

#### Single Prop

A prop mounted close to a large rudder provides superior control when you need it most. BOATING Magazine (June '03) advised "...prop-powered boats track better (than jets) in most conditions, especially at slower speeds and particularly when running downsea.... If your cruising ground throws a lot of rough water at you, choose the props". With bow and stern thruster, the 34z has comparable close-quarter maneuvering agility to the new IPS, AXIUS and ZEUS computer systems.

#### Reduced Owner Maintenance

Diesel mechanics say the 34z has the best engine access they've ever seen on any powerboat! The entire pilothouse deck rises 45 degrees on electric lifters. Side panels permit full access to either side of the engine. You can then step down from the cockpit to into either locker for checks or service. Wing fuel tanks are used to improve stability. Full-sized 26" mountain bikes may be stored hidden away in these lockers. Mesh bags organize hoses, shorepower cords, life jackets, etc. Deck drains capture rain and dew which then flow into the gray water system out through the transom rather than over the side through a gap in the toerail ... streaking the topsides. The only exposed teak on deck is on the optional Adirondack stern seat which is protected by a snap-on vinyl cover when not in use.

## SPECIFICATIONS

### Basic Information

Manufacturer:	MJM Yachts	Boat Type:	Express Cruiser
Model:	34z	Hull Material:	Fiberglass
Year:	2016	Hull Type:	Modified Vee
Category:	Power		

### Dimensions & Weight

Length:	34.00 ft	Draft - max:	2 ft 4 in - 0.71 meter
LOA:	37 ft 4 in - 11.38 meter	Bridge Clearance:	9 ft 5 in - 2.87 meter
Beam:	11 ft - 3.35 meter	Dry Weight:	10600 ft
Deadrise Aft:	18.00 °		

### Tank Capacities

Fuel Tank:	144 gallons - 1 tank(s)	Holding Tank:	20 gallons - 1 tank(s)
Fresh Water Tank:	58 gallons - 1 tank(s)		

## Accommodations

Total Cabins:	-	Crew Cabins:	-
Total Berths:	-	Crew Berths:	-
Total Sleeps:	-	Crew Sleeps:	-
Total Heads:	1	Crew Heads:	-
Captains Cabin:	No		

## FEATURES

### HULL

- Modified deep-V, offshore hull design with sharp entry and moderate beam having dual lifting strakes, chine flats, 18-degree transom deadrise carried forward 11 feet, for stability and level acceleration, and with prop pocket for shoal draft operation.
- Exceptionally strong, light, high-tech composite construction. Pressure-rollers are used outside the mold to wet-pre-preg stitched biaxial E-glass/Kevlar outer skin with Gougeon slow-set epoxy to a 60:40 ratio (glass to resin ratio) which is then layered in the mold with ¾" Corecell closed-cell foam core and vacuum-bagged to 14.7 psi to compress/bond the laminate and eliminate air prior to post-curing at 145F
- Solid unidirectional E-glass/epoxy GRP centerline keel/backbone and chines with structural grid to minimize damage from grounding and to exceed 2004 draft CE Mark (ISO) structural standards for an Ocean Category A vessel.
- Solid glass or high-compression Penske-Board coring with rebated outer/inner skin bonding in way of thru-hull fittings or thru-bolted hardware.
- Transom door to starboard.
- Hull is gelcoat off-white in color with single color cove and chine stripe.
- Transferable 10-year osmotic blister warranty.
- Bilges, finished with smooth, easy-to-clean, gloss-white finish.
- PVC guardrail with high-polish stainless rub strip.
- Large, tinted Lewmar through-hull opening ports in saloon w/screens and pull-down shades.
- Molded quarter-guard with stainless steel rubstrake.

### DECK

- High-tech composite construction under vacuum using oven post-cured epoxy impregnated, stitched biaxial E-glass and 1" CK100 Baltek cored laminate.
- Solid glass or high compression Penske Board core in way of all thru bolted hardware and over-sized epoxy G-10 pressure- laminated composite backing plates for all cleats and stanchions.
- Hull to deck fused together as monocoque structure with cyano-acrylate adhesive with a shear strength of 1.5 tons per square inch and with mechanical fasteners of the gunwale guard on 8-10" centers.
- Exceptionally strong, fully-molded (inside & out) and gelcoated windshield frame/posts with hardtop.
- Cook "Armor Flex" off-white gelcoat deck w/sand-textured non- skid. Contrasting non-skid color is an option. Transom door with heavy-duty latch & retainer clip when open.
- Convertible pilothouse enclosed by clear, roll-up, vinyl windows with Oyster Sunbrella border. Windows and aft entry door with combo window/screen roll-up in place.
- Dual fully-opening windshields with safety glass and electric wiper/washers.
- Clamcleats P&S to retain 35' bow lines in cockpit, immediately accessible for docking without going on foredeck.
- Deck drains divert dirt/soot/dew/rain into gray water system and out transom...rather than onto topsides.
- 12" 316 stainless custom bow cleats (2) and 10" side-deck and stern cleats (4) with matching bow chocks (2) having 22mm opening

- 1" Stainless handrails (6 pairs) on cabin trunk, pilothouse roof, side windshield frame, aft of pilothouse for boarding and under pilothouse roof aft of piloting chairs and companionway entrance.
- Molded boarding steps (P&S) in cockpit.
- Flush-top cockpit coamings for comfortable seating, ease of boarding and fishing.
- Large storage compartments under cockpit sole (2) with hinged lids, overboard drains and lockdown seals capable of holding deflated Avon Redcrest dinghy, offshore survival raft, or optional fish box.
- 20"W x72"L x40"H pilothouse settee lockers P&S w/piston-activated lockable lids. Lockers have vinyl flooring and mesh storage bags for fenders, docklines, power cords, hoses, mountain bike, hard luggage and/or golf club storage.
- Large, varnished teak storage drawers (2) under piloting seats.
- Pilothouse settees with Sunbrella cushions and backrests. Settees convert to two 2'x6.5' berths.
- Lewmar 20x20 deck hatch with screen and draw-shade.
- Opening ports with screens (2) over galley & head.
- Gloss-varnished teak bi-fold companionway door and 4- section hinged cover with brass combo lock.
- Matched Bentley Rivermaster piloting seats in Light Oyster Ultraleather on swiveling bases with sliders.
- Pilothouse deck hinges upward 40 degrees on power screw lifts for engine compartment access.
- Bi-level instrument console with gray anti-glare top surface for multi-function navigational display; controls and instruments.
- Ritchie SS-2000 4.5" flush-mount, high-performance, Supersport compass with movable sunshield.
- Navigation center to port with 25x17 surface for Chart kit and/or laptop and 4" deep drawer plus panel for VHF or phone hookups.
- Gloss-varnished teak 36x15 table with dual sockets, in pilothouse and below in saloon.
- Recessed drink holders (4).
- 3x5 American flag with teak staff and retainer pin..

## PROPULSION

- Single Yanmar 380 hp 6LY3-UTP 380 horsepower, electronically controlled, 24 valve, 6-cylinder, freshwater cooled, turbo-charged diesel. Kansecki high performance 7 degree down-angle transmission with 2.4:1 gear ratio.
- Standard Yanmar 80 amp alternator.
- Standing engine-room access by means of an electronically- elevated bridgedeck with 4 part tackle for emergency backup and safety.
- Single-lever electronic shift and throttle control for optimum response.
- Digital engine display for tachometer/engine hours, oil pressure, water temperature, fuel level, fuel consumption rate, and much more.
- Yanmar engine spares kit and service manual.
- UL approved fuel shutoff and fuel/air separators.
- 900 Series Racor fuel filter with spare cartridge.
- Manganese bronze strut with cutlass bearing.
- 2.0" Aquamet 22 stainless shaft w/4-blade computer milled Acme Prop w/Right Hand Rotation.
- PSS dripless shaft seal w/zinc retainer ring.
- Interconnected, bright-finished and coated aluminum fuel tanks (2) w/148 gallon capacity with Wema SUF American standard fuel level sensor.
- Parker 221FR fire resistant USCG Class 1 high-tensile, steel- wire-braid-reinforced, fuel hoses.
- Marelon engine raw water intake seacock with bronze strainer and fresh water (and emergency bilge pump) engine flush.
- Custom Sounddown "Silencer" muffler.
- High-density, sound-absorbing tiles over prop pocket.
- Stainless engine air intakes (4) under coamings.
- Fiberglass drip pan below engine and transmission.

- Seafire automatic fire suppressant system in engine compartment with portable extinguisher in cockpit.

## ELECTRICAL

- Custom built MJM hinge-out, backlit electrical panel with 25-12v DC breakers, stainless breaker guards and digital DC monitor.
- Blue Seas battery combiner
- Cantalupi halogen cabin reading lights (4).
- Overhead halogen lights in galley (3), head (2), saloon (2), piloting console (2) and pilothouse (2) on 3 dimmer switches.
- Courtesy lights (4) in cockpit, saloon and head.
- Engine compartment lights (2).
- Stainless 12V outlets (3).
- 505-ampere hour absorbed glass-mat battery capacity with 2- Group 4D 200 AH house and 1-Group 31 105 AH engine-start battery.
- Navigation and anchoring lights.
- Bonded electrical system and underwater fittings w/galvanic isolator.
- Field serviceable electrical system with bundled/numbered w/Deutsch O-ring waterproof connectors.

## STEERING

- Edson 24" stainless steel destroyer wheel.
- Teleflex Sea Star manual hydraulic steering with heavy-duty brass cylinder.
- Large Aqualoy 22 stainless steel plate rudder blade.
- Recessed Lenco electric trim-tabs with console control.

## PLUMBING

- Pressure hot/cold water for galley with Shurflo Smart Sensor microprocessor controlled with variable-speed water pressure pump w/10-gal. water heater and 58-gal. fresh water tank.
- Two Shurflo 1000 automatic bilge pumps in bow and midships compartments isolated by the main bulkhead under the wheel.
- Vacuflush head system with 20 gallon holding tank (only uses cupful of freshwater per flush) w/ marina pump out and overboard macerator discharge.
- Back-up Bosworth high-capacity cockpit-operated manual bilge pump.
- Centralized gray water discharge system through transom to minimize thru-hulls.
- Gray water sump with strainer and clear inspection port for shower, icebox and AC condensate.
- Marelon non-corrosive thru-hulls/seacocks with strainers and double-clamped hose connections.

## INTERIOR

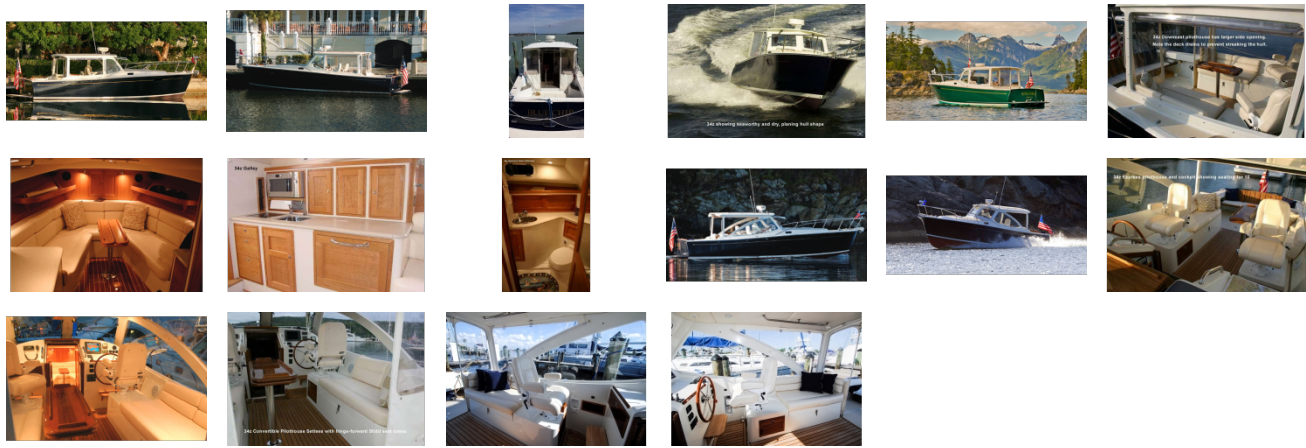
- Large wrap-around saloon lounge with 5" bolstered Ultraleather cushions in color of choice. Converts to two large twin-berths 24"x84".
- Optional Double-berth insert and cushion fillers.
- Satin-varnished cherry framed off-white laminate (classic Herreshoff look) bulkhead forward with cherry access doors to large forepeak anchor locker. Optional all-cherry finish.
- Off-white laminated paneling with cherry trim.
- Pushbutton latches on cabinet sliders, doors and drawers.
- Gloss varnished teak & holly cabin sole w/storage locker.
- Privacy pull shades over hull ports and forepeak hatch.
- Oyster Corian counter-tops in galley, side table and head.
- Poly storage bins (3) under saloon settee.
- Satin-finished cherry bureau unit to starboard with cabinet, wine rack and book shelf above and 3 drawers below.

- Off-white, foam backed vinyl headliner & hull liner.
- Head door, when open, serves as large dressing mirror and privacy door, blocking view from pilothouse without having to close companionway entrance.
- Supplemental 8x12 dressing mirror in main saloon.
- Hanging locker to port of companionway entrance with outboard storage shelf is closed off by inward swinging
- 2-section louvered teak companionway door.
- Stainless double-hooks (3) for clothing
- Electrical panels are mounted on recessed, hinge-out door to starboard of companionway entrance.
- Enclosed head/shower to starboard with countertop cabinet, enclosed locker under sink w/stainless TP holder, towel rings
- (2) and shower-sump.
- Teak companionway steps with tool storage.
- Table mounting socket for standard 36x15 gloss-varnished dual position table.

## GALLEY

- Recessed polished SS sink with removable Corian cover.
- Drawers (3) for flatware w/Rubbermaid organizer, utensils & rolled goods
- Large top-loading 5.5 cu ft. ice box w/dividers, organizer baskets and drain to gray water sump.
- Large, above-counter 2-sliding door storage cabinet with shelf.
- Storage locker with shelf for pots/pans and cleaning supplies under sink. Flip panel to large Rubbermaid trash bin.
- Overhead safety handrail and towel drying bar.
- Shelf for storage of owner supplied Origo 2- Burner Stove or optional Microwave.
- Double stainless hook for hotpads and dishtowel.
- The Cruising Galley option includes Refrigerator Drawer, Seagull Water Purifier; Princess Single-Burner Ceramic Cooktop, Seafron 12-volt Refrigeration and Microwave Oven and Toaster.

GALLERY



**North Point Yacht Sales**  
7330 Edgewood Road  
Annapolis, MD 21403  
  
Phone: 410-280-2038