



365 COUPÉ
WINNER



Nimbus 365 Coupé

Construction, equipment, functionality
and detailed technical information.



NIMBUS BOATS

Production method and hull construction.

Vacuum injection

On the Nimbus 365 Coupé all laminated features and parts are vacuum infused.

The unique vacuum infusion properties in combination with high quality materials ensure high rigidity, strength and minimum weight.



Divynycell is used for the sandwich laminate and provides excellent insulation properties from both heat and cold while leading off condensation effectively. Together with multilayer matting this forms a well-insulated, strong but light hull.

The innerliner and headliner, including the standing bulkhead are built entirely in glass-fibre. This results in easy-to-maintain, smooth surfaces in stowage lockers, stowage areas, hull sides and ceilings.

For extra strength and comfort in the construction, the standing bulkhead is glued into the innerliner, hull and deck. As well as contributing to higher rigidity this practically eliminates all those irritating squeaks and creaks. The boat is, and seems, quiet, safe and solid.



Propulsion and engine installation.



Manoeuvre and propulsion system

The 365 Coupé is fitted with two smaller rudders instead of one large, this providing several advantages:

- + Less draught, i.e. the boat can navigate shallower waters
- + Directional stability at all speeds
- + Better manoeuvring
- + Minimal service and maintenance
- + Lower cost

The twin rudders and a small, well-balanced keel give the 365 Coupé excellent manoeuvring performance in comparison to other axial boats. Manoeuvring ability at high speeds is comparable to boats with prop shafts. Additionally, she has better manoeuvring abilities throughout her speed register and better



rudder response than from a single large rudder.

Thruster propellers fore and aft are standard and provide the 365 with millimetre precision manoeuvring in harbour and when laying to. A big plus for both beginners and experienced sailors. The bow thruster tunnel is specially designed to provide extra torque and makes the thruster propeller function in the bow more effective.

Engine installation

When delivered with a single Volvo Penta the engine is fitted in an "engine box" that reduces noise by means of built-in "sound-traps" and provides the engine with sufficient ventilation. The "engine box" reduces engine noise considerably and results in a more elegant engine installation with all moving parts



securely protected. Consequently, the engine room can be used as a stowage area.

Bevel gear

The bevel gear allows the engine to be fitted outside the coupé space, providing a number of advantages:

- + Easy to service because of easy accessibility to the engine room.
- + Reduction of noise and vibrations in the coupé area when under way.
- + Makes more rational use of hull for e.g. stowage and living space.

Service-friendly owing to careful positioning of the seawater filter, oil level and fuel filter. All these are easy to access = better safety, easier maintenance, full control.

Technical equipment and safety.



Technical equipment

The 365 Coupé is easy to service owing to carefully planned installations. Most of the technical equipment is placed in a separate technical equipment area at the foot of the guest cabin on the port side. Within sight, tidy and easily accessible. The battery bank is placed



below decks in the aft storage area and divided in three groups:

- + Engine
- + Heavy aux.
- + Service

The fuse box is easy to access, located in the saloon beneath the aft cushions.

Safety

The 365 Coupé is tried and tested in extreme conditions and meets the safety standards required by both private owners and professionals. The hull construction as a whole and its manoeuvring performance enhances the high safety standards of the boat still further.

The boat is approved and certified as per CE category B, for use outside open coastal and coastal island areas. The boat is designed for use in winds speeds up to 8 Beaufort (approx. 21 m/s) and equivalent wave heights (significant wave heights up to 4 m). These conditions can prevail in long voyages beyond coastal islands, in unsheltered coastal waters and large inland seas where such wave heights can occur.

Handles and rails

There are other, smaller features, besides those of hull, driveline and technical equipment that contribute that little bit more to safety aboard. The boat is fitted with a number of handholds and rails in the cabin, the coupé, on the aft deck and on the fore-deck. For Nimbus, providing a handhold wherever you find yourself is a basic premise.

An integrated and sturdy swimming ladder with "proper" handholds for safe and secure getting out of and into the water. Integrated and accessible position of automatically inflatable lifebuoy.

Fire-fighting

The boat is fitted with two separate fire-fighting systems, an automatic and a manual.





Sidewalk concept and innovative integration.

Sidewalk concept

The wide sunken sidewalk deck running fore to aft provides trouble-free, safe and easy access aboard. It is easy to move about and to lift and load items onto and off the boat.

The asymmetric design maximises space in the boat, providing larger surfaces and more stowage lockers.

The laminated side door integrated with the boat superstructure provides better function, more elegant design and an extra exit to the deck for e.g. easier mobility when preparing food, loading and laying to. The side door provides quick and easy access to the sidewalk. This is especially

important when laying to in hard weather and windy conditions. Owing to the side door and well designed control positions (forward and reverse, fore and aft propellers and wheel) at the helm, the boat can be manoeuvred standing outside on the sidewalk or sitting on the rail.

The cover is designed for facilitating access to the entire sidewalk when laying to and does not need to be folded back or opened to reach the aft cleats.

innovative integration

- + Wholly integrated windlasses fore and aft. Handsome, tidy installations that ensure

function in all conditions.

- + Fixed tender holders at the stern with line hooks.
- + Plenty of stowage space both fore and aft.
- + Large integrated nose with heavy stainless steel pulpit for safe and secure coming aboard and going ashore.
- + Pulpit with teak covered steps for easy coming aboard in the middle/over the side of the boat.
- + Heavy railing strip around the entire boat, including the swimming platform and nose. This protects the boat and reduces the risk of scratches and other damage.





Superstructure and deck.

Laminated windows and single pane windshield for better visibility. When the hardened glass panes are glued into the superstructure their rigidity contributes to a more stable construction overall. Glued panes eliminate irritating creaking and squeaking noises.

Concealed windscreen wipers with washer function integrated in roof construction providing an elegant look.

The 365 Coupé has a large electrical roof hatch that can be powered electrically.

The stainless steel radar mast is made to accommodate most installations (radar, GPS, searchlight, signal horn, television aerial, VHF aerial, pennant, navigation lights).

Sundeck with integrated mug holders on foredeck.

Heavy quality, lockable sliding

door between aft deck and deck saloon.

Large aft deck with folding aft sofa in stern. When folded out this provides a roomy L-shaped sofa for 4-5 persons. Folded it provides a space for social activities and cargo.

Teak table on aft deck with folding teak chair. Storage brackets can be fitted in side stowage lockers.

Decorative lighting on after-deck and sidewalk with integrated ceiling spotlights.

Large teak covered swimming platform sized approx 3 x 1 m, teak covered after-deck, sidewalk and foredeck. The teak is FSC marked. FSC stands for Forest Stewardship Council, an organisation working for environmentally friendly, socially responsible and economically viable use of world forests





Galley and saloon.

Galley

Large galley with two sinks, LPG stove with oven and plenty of worktop space in Corian®. Elegant, two-piece mahogany lid covers the galley when not in use.

Folding helm provides more galley space. Integrated spice shelf on the inside of the D-post. Pull-out drawers instead of hatches in the galley provide better function and view of contents. Pull-out cocktail cabinet with room for tumblers, wine glasses and bottles. Service for six included as standard.

Saloon

Roomy U-sofa with height adjustable mahogany table and seating for 6. The front part of the sofa can be turned round and used as a two-seat sofa facing forward. Leather covered stainless steel handles suitably



placed for safety and comfort. The electric sliding glass roof lets in the light and gives a feeling of added space to the deck saloon. This large opening brings an outdoor feeling into the coupé when open.

Fitted television with remote controlled electric height adjustment. The 365 Coupé is fitted with the Nimbus HI-FI system as standard, with radio, CD, DVD and with aux. outlets for connection of such external sound

sources as iPhones and MP3 players. The 365 is fitted with a subwoofer.

Lighting

Generous number of lighting sources, both functional and indirect, provide good opportunities for varied lighting effects according to occasion and need. The built-in spotlights are adjusted with a dimmer switch.

Comfortable, aesthetically and functional living.

Helm position

Ergonomic and aesthetically pleasing design with everything where it should be. All switches and controls are easy to reach. Standard equipment includes a Simrad 12 inch plotter placed in the centre of the dash, echo sounder, log and trip computer with fuel consumption. Colours and material reduce reflection and provide an exclusive muted appearance.

The 365 Coupé can be delivered fitted out and approved for Lake Boden, with closed sanitation system (holding tank for grey and black water) for external emptying at sanitation stations. Lake Boden has some of the highest environmental regulations in the world for pleasure craft.



Cabin and below deck

The laminated headliner provides a light, aesthetically pleasing design with smooth, easy-to-clean surfaces.

There are two cabins to port, the fore-cabin and a side cabin. Separate head with shower cabin and folding lavatory lid.

Mahogany top surrounding the washbasin and removable teak duckboards for easy cleaning. Large, roomy and light fore-cabin with skylight and forward window. Skylight fitted with mosquito net and sunblind.

Generous storage space in the wardrobe on both sides and pull out drawers beneath the double berth. The fore-cabin features a built-in makeup drawer.

Double berth in side cabin and

separate wardrobe.

Lighting sources, both functional and indirect, provide good opportunities for varied lighting effects according to occasion and need.

The 365 is fitted with an electrically operated lavatory.

The 365 can be fitted with a central vacuum cleaner connected from the side cabin.



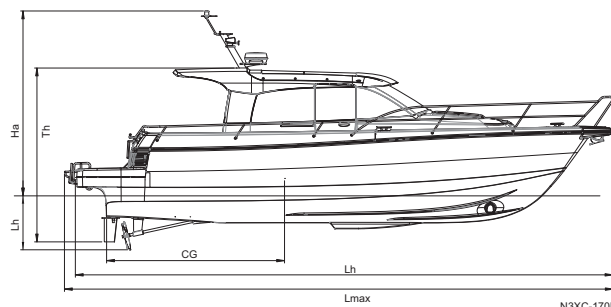
Ready-to-cruise

All our boats are now delivered with "ready-to-cruise" equipment package which includes the following equipment.

- + Simrad 12" plotter
- + Bow thruster
- + Stern thruster
- + Cushions in cockpit
- + Battery charger
- + Heater & defroster
- + Electric windlass in stern
- + TV/DVD with electrical lifting bracket
- + Radio/CD Hi-fi
- + Sunblind, internal Coupé
- + roof
- + Search light, on decks house
- + Teak deck (complete boat)
- + Trimtabs
- + Electrical WC
- + Trip computer
- + logg and sounder

365 Coupé

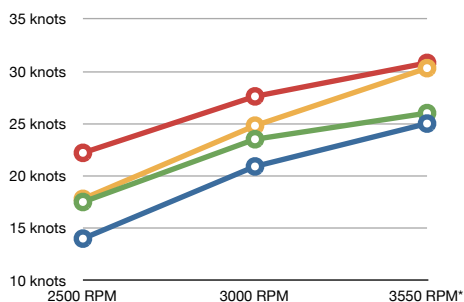
Technical data



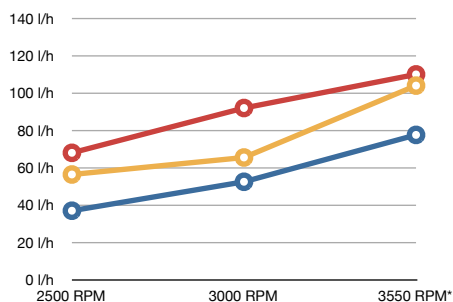
N3XC-170B

Speed and consumption

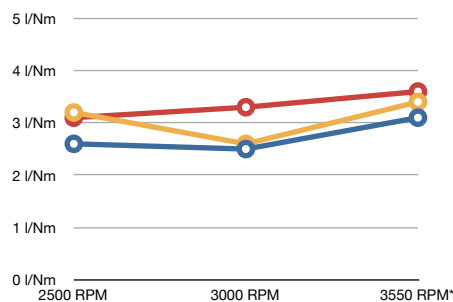
Speed



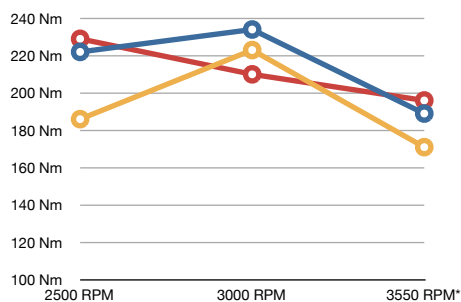
Litres/hour



Litres/Nautical mile



Range (Nm)



Dimensions and weight

Lmax, overall length	11,56 m
Lh, length of hull	11,33 m
Bmax, overall beam	3,45 m
Bh, beam of hull	3,40 m
Ha, air draught fr. water	3,90 m
air draught, folded mast	3,66 m
Th, transport height	3,70 m
Thv, transport height in cradle	3,85 m
Tmax, draught	1,14 m
CG, centre of gravity single D6	3,90 m
CG, centre of gravity twin D4	3,75 m
MLDC, Max. weight of boat with max. load, including fixed tank contents (single/twin engine)	8471 / 8994 kg
MLCC, weight of boat, excluding load (single/twin engine)	6391 / 6914 kg
MMTL, Max. load (fuel, water, persons, provisions etc.)	2080 kg
Max people	8 pers
CE category	B
Berths	4

Tank capacity

Fuel capacity	700 l
Water capacity	270 l
Hot water tank	20 l
Sewage tank	120 l

Electrical system 12V and 230 V

Start batteries	1*12V x 75Ah
Service batteries	6*12V x 80Ah
Service battery, Heavy Duty (extra)	1*12V x 75Ah
Frequency	50Hz
Battery charger	230V AC
Shore power intake	230 V 16 A

Engine alternatives

- Volvo Penta D6-435 320 kW (435 hp) no test data
- Volvo Penta D6-370 272 kW (370 hp)
- Volvo Penta 2xD4-225 165 kW (225 hp)
- Volvo Penta 2xD4-260 191 kW (260 hp)
- Volvo Penta 2xD4-300 221kW (300 hp)

Nimbus Boats AB carry out continuous product development, so the information on this sheet may vary between boats. Differences in equipment levels, loading conditions etc affect the speed and fuel consumption figures. The Range figures should only serve as an indicator and is based on 84% of max fuel capacity and optimized conditions. Range is greatly affected by wind, wave and current, driving style, boat condition etc. Some equipment shown may be optional extras and some options may not be available.

